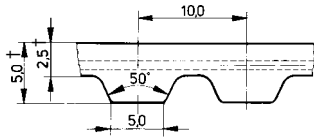


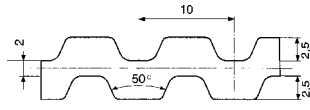
AT10 BELTS

SS SINGLE SIDED



† 4.5mm and 2mm on Breco belts

DL DOUBLE SIDED



TECHNICAL DATA SUMMARY

Potential capacity 70 kW
 Maximum speed 15000 rpm
 Maximum linear speed 60 m/s
 Allowable tensile load F_{zul} 1400N / 10mm of belt width
 Weight per metre 0.063 kg / 10mm of belt width
 Full technical data see page 118

AVAILABILITY



STANDARD BELT AND PULLEY WIDTHS

Standard belt widths b	16	25	32	50	75	100	150
Pulley face width B	21	30	37	56	81	106	156
Stock pulley width B_N	31	40	47	66			

TYPE profile/length	No. of teeth Z	SYNCHROFLEX		BRECO M / V		BRECOFLEX	
		SS	DL	SS	DL	SS	DL
AT10 / 400	40					■	
AT10 / 500	50	●				■	
AT10 / 530	53					■	
AT10 / 560	56	●				■	
AT10 / 580	58	●					
AT10 / 600	60	●					
AT10 / 610	61	●				■	
AT10 / 630	63					■	
AT10 / 660	66	●				■	
AT10 / 700	70	●				■	
AT10 / 720	72					■	
AT10 / 730	73	●					
AT10 / 780	78	●				■	
AT10 / 800	80	●					
AT10 / 810	81					■	
AT10 / 840	84	●				■	
AT10 / 880	88					■	
AT10 / 890	89	●				■	
AT10 / 920	92	●				■	
AT10 / 960	96	●				■	
AT10 / 970	97					■	
AT10 / 980	98	●				■	
AT10 / 1000	100	●				■	
AT10 / 1010	101	●				■	
AT10 / 1050	105	●				■	
AT10 / 1080	108	●				■	
AT10 / 1100	110	●				■	
AT10 / 1150	115	●				■	■
AT10 / 1200	120	●				■	■
AT10 / 1210	121	●				■	■
AT10 / 1240	124					■	■
AT10 / 1250	125	●				■	■
AT10 / 1280	128	●				■	■
AT10 / 1300	130	●				■	■
AT10 / 1320	132	●				■	■
AT10 / 1350	135	●				■	■
AT10 / 1360	136	●				■	■
AT10 / 1400	140	●				■	■
AT10 / 1480	148	●				■	■
AT10 / 1500	150	●				■	■
AT10 / 1600	160	●				■	■
AT10 / 1700	170	●				■	■
AT10 / 1720	172	●				■	■
AT10 / 1800	180	●				■	■
AT10 / 1860	186	●				■	■
AT10 / 1900	190					■	■
AT10 / 1940	194	●					

Any joined length available in pitch multiples from 700mm.
 Minimum quantities apply to belts of 10, 12 or 16mm width

TYPE profile/length	No. of teeth Z	SYNCHROFLEX		BRECO M / V		BRECOFLEX	
		SS	DL	SS	DL	SS	DL
AT10 / 2000	200					■	■
AT10 / 2120	212					■	■
AT10 / 2240	224					■	■
AT10 / 2360	236					■	■
AT10 / 2500	250					■	■
AT10 / 2650	265					■	■
AT10 / 2800	280					■	■
AT10 / 3000	300					■	■
AT10 / 3150	315					■	■
AT10 / 3350	335					■	■
AT10 / 3550	355					■	■
AT10 / 3750	375					■	■
AT10 / 4000	400					■	■
AT10 / 4250	425					■	■
AT10 / 4500	450					■	■
AT10 / 4750	475					■	■
AT10 / 5000	500					■	■
AT10 / 5300	530					■	■
AT10 / 5600	560					■	■
AT10 / 6000	600					■	■
AT10 / 6300	630					■	■
AT10 / 6700	670					■	■
AT10 / 7100	710					■	■
AT10 / 7500	750					■	■
AT10 / 8000	800					■	■
AT10 / 9000	900					■	■

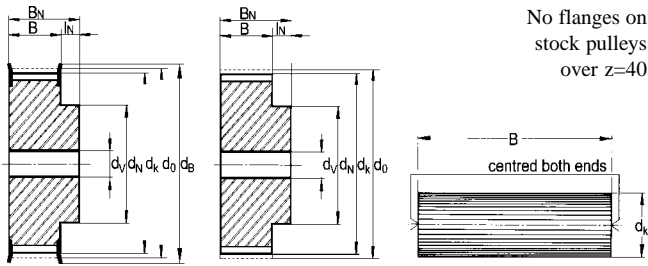
BELT ORDER CODE EXAMPLE

Width	Profile / length	Specification
25	AT10 / 1860	Synchroflex
32	AT10 / 3860	Breco V

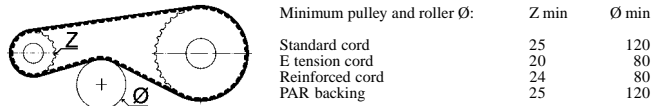
FLEX=endless, M=open length, V=joined

- Standard belt length, normally held in stock.
- Standard belt length, only available to special order.
- * Intermediate lengths available between 1050-22000mm, only available to special order. Min. quantity will apply.

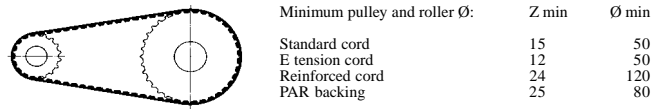
PULLEY & BAR DIMENSIONS



REVERSE BENDING



NORMAL USE



Pulley width B _N	Z, no. teeth	d _o (mm)	d _k (mm)	d _B * (mm)	d _N (mm)	bore size d _v d _{max}
31	12	38.20	36.43	42		24
40	13	41.38	39.61	44		26
47	14	44.56	42.79	48		30
66	15	47.75	45.98	51	32	8 34
Bar	16	50.93	49.10	55	35	8 36
	17	54.11	52.30	58		40
	18	57.30	55.45	61	40	8 44
	19	60.48	58.65	64	44	8 46
	20	63.66	61.80	67	46	8 50
	21	66.85	65.00	70		52
	22	70.03	68.20	74	50†	8 56
	23	73.21	71.40	76		60
	24	76.39	74.55	80	58	8 62
	25	79.58	77.75	82	60	8 66
	26	82.76	80.90	86	60	8 68
	27	85.94	84.10	90	60	8 72
	28	89.13	87.30	93	60	8 76
	29	92.31	90.45	96		78
	30	95.49	93.65	99	60	8 82
	31	98.68	96.85	102		84
	32	101.86	100.00	105	65	10 88
	33	105.04	103.20	109		88
	34	108.23	106.40	112		92
	35	111.41	109.60	115		96
	36	114.59	112.75	118	70	10 98
	37	117.77	115.95	121		101
	38	120.96	119.10	125		104
	39	124.14	122.30	128		106
	40	127.32	125.50	131	80	10 110
	41	130.51	128.70	134		110
	42	133.69	131.85	137		112
	43	136.87	135.05	140		114
	44	140.06	138.20	144	90†	16 118
	45	143.24	141.40	147		120
	46	146.42	144.60	150		122
	47	149.61	147.80	153		122
	48	152.79	150.95	156	95	16 124
	49	155.97	154.15	160		126
	50	159.15	157.30	162		130
	51	162.34	160.50	166		134
	52	165.52	163.70	169		136
	53	168.70	166.85	172		140
	54	171.89	170.05	176		144
	55	175.07	173.25	178		146
	56	178.25	176.40	182		150
	57	181.44	179.60	185		152
	58	184.62	182.80	188		156
	59	187.80	185.95	191		160
	60	190.99	189.15	195	110	16 162

Pulley width B _N	Z, no. teeth	d _o (mm)	d _k (mm)	d _B * (mm)	d _N (mm)	bore size d _v d _{max}
31	61	194.17	192.35	198		164
40	62	197.35	195.50	201		166
47	63	200.54	198.70	204		170
66	64	203.72	201.90	207		171
Bar	65	206.90	205.05	210		174
	66	210.08	208.25	214		175
	67	213.27	211.45	217		177
	68	216.45	214.60	220		181
	69	219.63	217.80	223		185
	70	222.82	221.00	226		187
	71	226.00	224.15	230		191
	72	229.18	227.35	232		193
	73	232.37	230.55	236		197
	74	235.55	233.70	239		201
	75	238.73	236.90	242		203
	76	241.92	240.10	245		207
	77	245.10	243.25	248		209
	78	248.28	246.45	252		213
	79	251.46	249.60	255		215
	80	254.65	252.80	258		219
	81	257.83	256.00	261		223
	82	261.01	259.20	265		225
	83	264.20	262.35	268		229
	84	267.38	265.55	271		231
	85	270.56	268.70	274		235
	86	273.75	271.90	277		239
	87	276.93	275.10	280		241
	88	280.11	278.25	284		245
	89	283.30	281.45	287		247
	90	286.48	284.65	290		251
	91	289.66	287.80	293		255
	92	292.85	291.00	296		257
	93	296.03	294.20	300		261
	94	299.21	297.35	302		263
	95	302.39	300.55	306		267
	96	305.58	303.75	309		269
	97	308.76	306.90	312		273
	98	311.94	310.10	315		279
	99	315.13	313.30	318		283
	100	318.31	316.45	322		285
	101	321.49	319.65	325		289
	102	324.68	322.80	328		293
	103	327.86	326.00	332		295
	104	331.04	329.20	335		299
	105	334.23	332.35	338		301
	106	337.41	335.55	341		305
	107	340.59	338.75	344		309
	108	343.77	341.90	347		311
	109	346.96	345.10	351		315

● Available from stock in Aluminium. Preferred sizes shaded red
 Non stock sizes available to order (see page 86)

STOCK PULLEY ORDER CODE EXAMPLE

Mat'l	Width B _N	Type / no. teeth	No of. flanges	Special instructions
AL	40	AT10 / 40	-2	

d_o = Pitch circle diameter
 d_k = Outside diameter
 d_N = Hub diameter († variable)
 d_v / d_{max} = Stock pulley bore diameter / max. bore
 d_B = Flange diameter (*approximate)