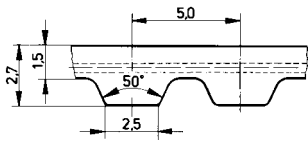
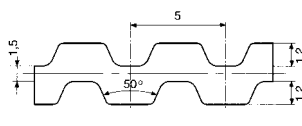


AT5 BELTS

SS SINGLE SIDED



DL DOUBLE SIDED



TECHNICAL DATA SUMMARY

Potential capacity 15 kW
 Maximum speed 40000 rpm
 Maximum linear speed 80 m/s
 Allowable tensile load F_{zul} 700N / 10mm of belt width
 Weight per metre 0.032 kg / 10mm of belt width
 Full technical data see page 117

AVAILABILITY



STANDARD BELT AND PULLEY WIDTHS

Standard belt widths b	10	12	16	20	25	32	50	75
Pulley face width B	15	17	21	25	30	37	55	80
Stock pulley width B_N	21	27	36					

TYPE profile/length	No. of teeth Z	SYNCHROFLEX		BRECO M / V		BRECOFLEX	
		SS	DL	SS	DL	SS	DL
AT5 / 225	45	●				■	
AT5 / 255	51	●				■	
AT5 / 260	52	●					
AT5 / 280	56	●				■	
AT5 / 300	60	●					
AT5 / 305	61					■	
AT5 / 330	66	●					
AT5 / 340	68	●				■	
AT5 / 375	75	●					
AT5 / 390	78	●				■	
AT5 / 420	84	●				■	
AT5 / 450	90	●					
AT5 / 455	91	●				■	
AT5 / 480	96	●					
AT5 / 500	100	●				■	
AT5 / 525	105	●					
AT5 / 545	109	●				■	
AT5 / 600	120	●					
AT5 / 610	122	●				■	
AT5 / 620	124	●					
AT5 / 630	126	●				■	
AT5 / 660	132	●					
AT5 / 670	134	●				■	
AT5 / 710	142	●					
AT5 / 720	144	●				■	
AT5 / 750	150	●					
AT5 / 780	156	●				■	
AT5 / 825	165	●					
AT5 / 840	168					■	
AT5 / 855	171					■	
AT5 / 860	172	●					
AT5 / 900	180	●					
AT5 / 975	195	●					
AT5 / 990	198					■	
AT5 / 1020	204					■	
AT5 / 1050	210	●				■	
AT5 / 1075	215					■	
AT5 / 1100	220					■	
AT5 / 1125	225	●				■	
AT5 / 1215	243					■	
AT5 / 1380	276					■	
AT5 / 1400	280					■	
AT5 / 1500	300	●				■	
AT5 / 1600	320					■	
AT5 / 1700	340					■	
AT5 / 1750	350	●					
AT5 / 1800	360					■	

Any joined length available in pitch multiples from 600mm.
 Minimum quantities apply to belts of 6, 8 or 10mm width

TYPE profile/length	No. of teeth Z	SYNCHROFLEX		BRECO M / V		BRECOFLEX	
		SS	DL	SS	DL	SS	DL
AT5 / 1900	380					■	■
AT5 / 2000	400	●				■	■
AT5 / 2120	424					■	■
AT5 / 2240	448					■	■
AT5 / 2360	472					■	■
AT5 / 2500	500					■	■
AT5 / 2650	530					■	■
AT5 / 2800	560					■	■
AT5 / 3000	600					■	■
AT5 / 3150	630					■	■
AT5 / 3350	670					■	■
AT5 / 3550	710					■	■
AT5 / 3750	750					■	■
AT5 / 4000	800					■	■
AT5 / 4250	850					■	■
AT5 / 4500	900					■	■
AT5 / 4750	950					■	■
AT5 / 5000	1000					■	■
AT5 / 5300	1060					■	■
AT5 / 5600	1120					■	■
AT5 / 6000	1200					■	■
AT5 / 6300	1260					■	■
AT5 / 6700	1340					■	■
AT5 / 7100	1420					■	■
AT5 / 7500	1500					■	■

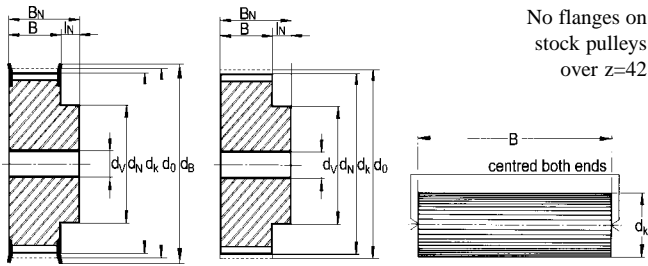
BELT ORDER CODE EXAMPLE

Width	Profile / length	Specification
25	AT5 / 720	Synchroflex
20	AT5 / 2035	Breco V

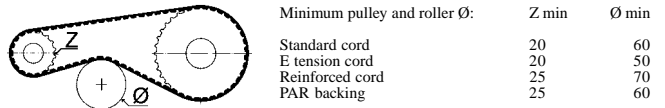
FLEX=endless, M=open length, V=joined

- Standard belt length, normally held in stock.
- Standard belt length, only available to special order.
- * Intermediate lengths available between 1050-15000mm, only available to special order. Min. quantity will apply.

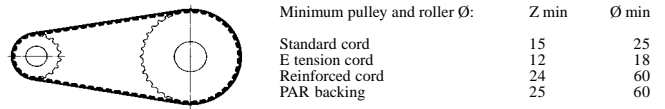
PULLEY & BAR DIMENSIONS



REVERSE BENDING



NORMAL USE



Pulley width B _N	Z no. teeth	d ₀ (mm)	d _k (mm)	d _B * (mm)	d _N (mm)	bore size	
						d _v	d _{max}
21	12	19.10	17.90	23	12 [†]	4	6
27	13	20.69	19.49	25			7
36	14	22.28	21.10	26	14	4	8
Bar	15	23.87	22.65	28	16	6	10
	16	25.46	24.24	30	18	6	12
	17	27.06	25.84	31			14
	18	28.65	27.43	33	20	6	16
	19	30.24	29.02	34	22	6	16
	20	31.83	30.61	36	24 [†]	6	18
	21	33.42	32.20	37			20
	22	35.01	33.79	39	24 [†]	6	22
	23	36.61	35.39	40			24
	24	38.20	36.98	42	26	6	24
	25	39.79	38.57	43	26	6	25
	26	41.38	40.16	45	26	6	25
	27	42.97	41.75	47	30	8	27
	28	44.56	43.34	48	32	8	29
	29	46.15	44.93	50			31
	30	47.75	46.53	51	34	8	33
	31	49.34	48.12	53			35
	32	50.93	49.71	55	38	8	37
	33	52.52	51.30	56			39
	34	54.11	52.89	58			39
	35	55.70	54.48	59			40
	36	57.30	56.08	61	38	8	42
	37	58.89	57.67	62			43
	38	60.48	59.26	64			45
	39	62.07	60.85	66			45
	40	63.66	62.44	67	40	8	47
	41	65.25	64.03	69			48
	42	66.85	65.63	70	40	8	50
	43	68.44	67.22	72			52
	44	70.03	68.81	74	50 [†]	8	52
	45	71.62	70.40	75			54
	46	73.21	71.99	77			56
	47	74.80	73.58	78			58
	48	76.39	75.17	80	50	8	60
	49	77.99	76.77	82			60
	50	79.58	78.36	83			60
	51	81.17	79.95	85			62
	52	82.76	81.54	86			64
	53	84.35	83.13	88			66
	54	85.94	84.72	90			66
	55	87.54	86.32	91			68
	56	89.13	87.91	93			70
	57	90.72	89.50	94			72
	58	92.31	91.09	96			74
	59	93.90	92.68	97			74
	60	95.49	94.27	99	65	8	76

Pulley width B _N	Z no. teeth	d ₀ (mm)	d _k (mm)	d _B * (mm)	d _N (mm)	bore size	
						d _v	d _{max}
	61	97.08	95.86	101			79
	62	98.68	97.46	102			80
	63	100.27	99.05	104			82
	64	101.86	100.60	105			82
	65	103.45	102.23	107			84
	66	105.04	103.82	109			86
	67	106.63	105.41	110			88
	68	108.23	107.01	112			90
	69	109.82	108.60	113			90
	70	111.41	110.19	115			90
	71	113.00	111.78	117			92
	72	114.59	113.37	118	80	8	94
	73	116.18	114.96	120			96
	74	117.77	116.55	121			96
	75	119.37	118.15	123			98
	76	120.96	119.74	125			100
	77	122.55	121.33	126			102
	78	124.14	122.92	128			104
	79	125.73	124.51	129			104
	80	127.32	126.10	131			106
	81	128.92	127.70	133			108
	82	130.51	129.29	134			110
	83	132.10	130.88	136			110
	84	133.69	132.47	137			112
	85	135.28	134.06	139			114
	86	136.87	135.65	140			116
	87	138.46	137.24	142			119
	88	140.06	138.84	144			119
	89	141.65	140.43	145			120
	90	143.24	142.02	147			120
	91	144.83	143.61	148			122
	92	146.42	145.20	150			124
	93	148.01	146.79	152			126
	94	149.61	148.39	153			126
	95	151.20	149.98	155			129
	96	152.79	151.57	156			130
	97	154.38	153.16	158			130
	98	155.97	154.75	160			132
	99	157.56	156.34	161			132
	100	159.15	157.93	163			134
	101	160.75	159.53	164			136
	102	162.34	161.12	166			139
	103	163.93	162.71	168			140
	104	165.52	164.30	169			140
	105	167.11	165.89	171			140
	106	168.70	167.48	172			142
	107	170.30	169.08	174			146
	108	171.89	170.67	176			146
	109	173.48	172.26	177			148

● Available from stock in Aluminium. Preferred sizes shaded red.
 Non stock sizes available to order (see page 86)

STOCK PULLEY ORDER CODE EXAMPLE

Mat'l	Width B _N	Type / no. teeth	No. of. flanges	Special instructions
AL	27	AT5 / 60	-0	

d₀ = Pitch circle diameter
 d_k = Outside diameter
 d_N = Hub diameter († variable)
 d_v / d_{max} = Stock pulley bore diameter / max. bore
 d_B = Flange diameter (*approximate)